

Our Mission

QED's mission is to provide the systems infrastructure and professional services that enable government and corporate finance entities to conquer their investment accounting, portfolio management, and securities operations business goals.

Committed, Expert Personnel

Dedicated QED professionals ensure that client needs are fulfilled on time and on budget. QED's strong and qualified professionals leverage and deploy their diverse financial expertise and resources to offer clients the best solutions, service, and support in the industry.

Contact Us

QED Financial Systems, Inc.
856.797.1200
www.QEDFinancialSystems.com
solutions@QEDFinancialSystems.com

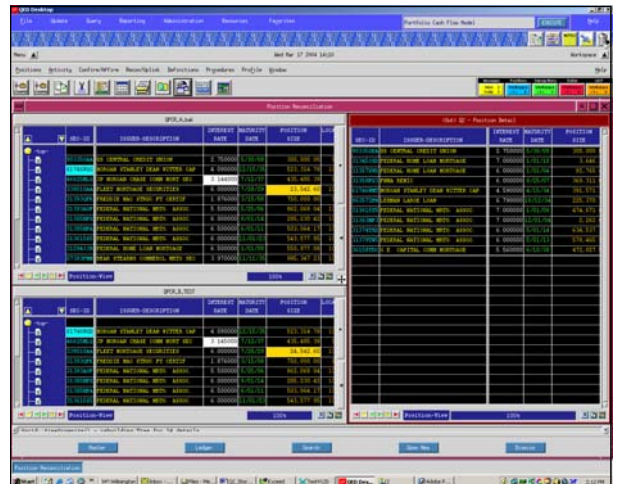


The automated reconciliation of investment accounting data with external sources such as custodian banks, external managers, prime brokers, trading systems, and DTCC, is an effective way to improve investment operation efficiency and reduce costs. The Q2 automated securities reconciliation feature was designed for the ultimate flexibility in promoting straightforward reconciliation between interested parties.

The Q2 reconciliation platform enables clients to extract transactions or positions from the Q2 accounting database across any time period. Using the data import manager, Q2 can automatically gather data from other sources to be reconciled directly against the Q2 book-of-record. Custom-defined reconciliation rules specify the combination of fields that are to be reconciled and can include hard or percentage based tolerances. The reconciliation process can be viewed and managed via the desktop or scheduled for background operation. Even the available hard copy exception reports can be tailored to exact user preferences and can include highlighting of near match values.

Q2 Reconciliation Features

- Separate customizable views for managing opposing trade/position sets
- Identification of near matches and fail conditions on a per record and per field basis
- Automatic write-off of differences that fall within established matching tolerances
- Direct navigation to transaction history, position holding, security master, and pricing history
- Dataset regression that accommodates multiple rule-set strategies
- Aggregation function that handles one-to-one, one-to-many, many-to-one, and many-to-many record matching
- Integrated peer messaging that attaches exception records for team collaboration
- Rules-based translation and crossover mappings that enable reconciliation with virtually any third party



Q2 provides standard interfaces to DTCC and major custodial and regional banks. As part of QED's Q2 implementation process, additional reconciliation interfaces are provided during system implementation based on client needs.