

Our Mission

QED's mission is to provide the systems infrastructure and professional services that enable government and corporate finance entities to conquer their investment accounting, portfolio management, and securities operations business goals.

Committed, Expert Personnel

Dedicated QED professionals ensure that client needs are fulfilled on time and on budget. QED's strong and qualified professionals leverage and deploy their diverse financial expertise and resources to offer clients the best solutions, service, and support in the industry.

Contact Us

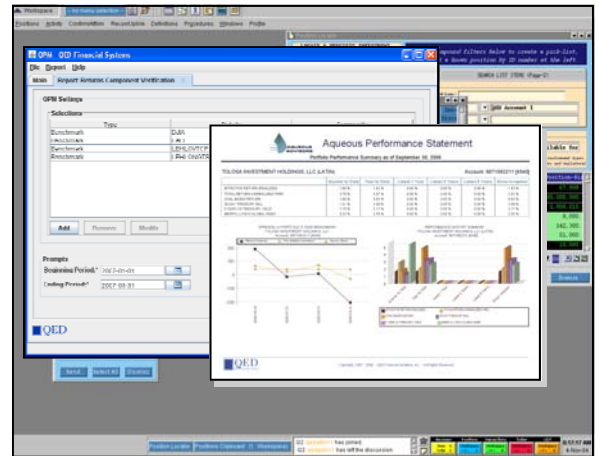
QED Financial Systems, Inc.
856.797.1200
www.QEDFinancialSystems.com
solutions@QEDFinancialSystems.com



The Q2 Investment Workflow System includes **integrated tools that measure and analyze portfolio performance**. Results and underlying data can be viewed in standard reports, or you can use Q2's graphical performance return engine, QPM, to create and store custom reports and composites. Performance returns can be generated for user-defined periods by account, AIMR segment, asset type, economic sector, industry classification, country, currency, user defined groups, and individual security.

Performance Measurement and Attribution Features

- Full AIMR compliance
- Calculation of complete net asset value, including securities market values on trade date basis, cash, ex-date basis earned and accrued income, securities receivables and payables, and accrued fees
- Daily evaluation and hard close at any desired point in time
- Calculation of component dollar and percentage returns for principal, income, foreign exchange gain/loss, other income and fees, as well as total return
- Calculation of returns by fund/account, AIMR segment, asset type, economic sector, industry classification, country, currency, user defined groups, or individual security
- Creation and linking of unlimited benchmarks, including custom blended formulas
- Creation of unlimited composites, including automatic entry and exit constituents rules
- Ability to exclude unmanaged assets from any category
- Recording of security and cash transfers between or through accounts, without performance impact
- Net-of-fees return calculation that can include and exclude designated fee types, as desired
- Audit trail that directly links to underlying securities and accounting records for drill-down
- Export of performance results and underlying accounting data to external applications
- Import of historical performance and benchmark information from external sources



Performance Reporting

Performance results can be viewed online using standard or ad-hoc reports, or can be interactively interrogated using Q2 graphical online analysis tools. In addition, the Q2 reporting engine can combine performance reports with other portfolio and enterprise information and build publication-quality reporting packages that can be delivered to your consumers either in print, by email, or via a Web portal.